



YB16CL-B (S) (12V 19Ah)

Description

The motor battery YB16CL-B (S), 12 volt, 19 Ah, is a starter battery with AGM technology. The YB16CL-B (S) is already factory activated (filled and charged) and therefore ready to use at delivery. This lead-acid battery is leak-proof and maintenance free. Can be installed in tilted position up to 90°. The YB16CL-B (S) is a real allrounder and suitable for seasonal use and short distances.

Performance

Rated Voltage	12
Nominal Capacity	19Ah (10hr)
CCA EN	-

Dimensions / Weight

Dimensions	Length	175 mm
	Width	100 mm
	Container Height	175 mm
	Total Height	175 mm
Net. Weight	6.48 Kg	
Weight acid	1.30 Kg	
Terminal	F	
Layout	0	

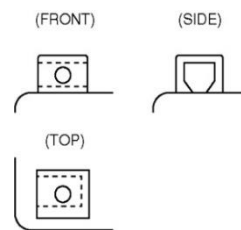
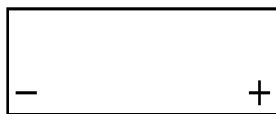
Features

- Absorbent Glass Mat technology
- Advanced starting power
- Excellent vibration resistant
- 100% maintenance free
- Factory activated, ready to use!



Layout

Terminal



(Note) All above information shall be changed without prior notice, Landport Batteries reserves the right to explain and update the latest information.